

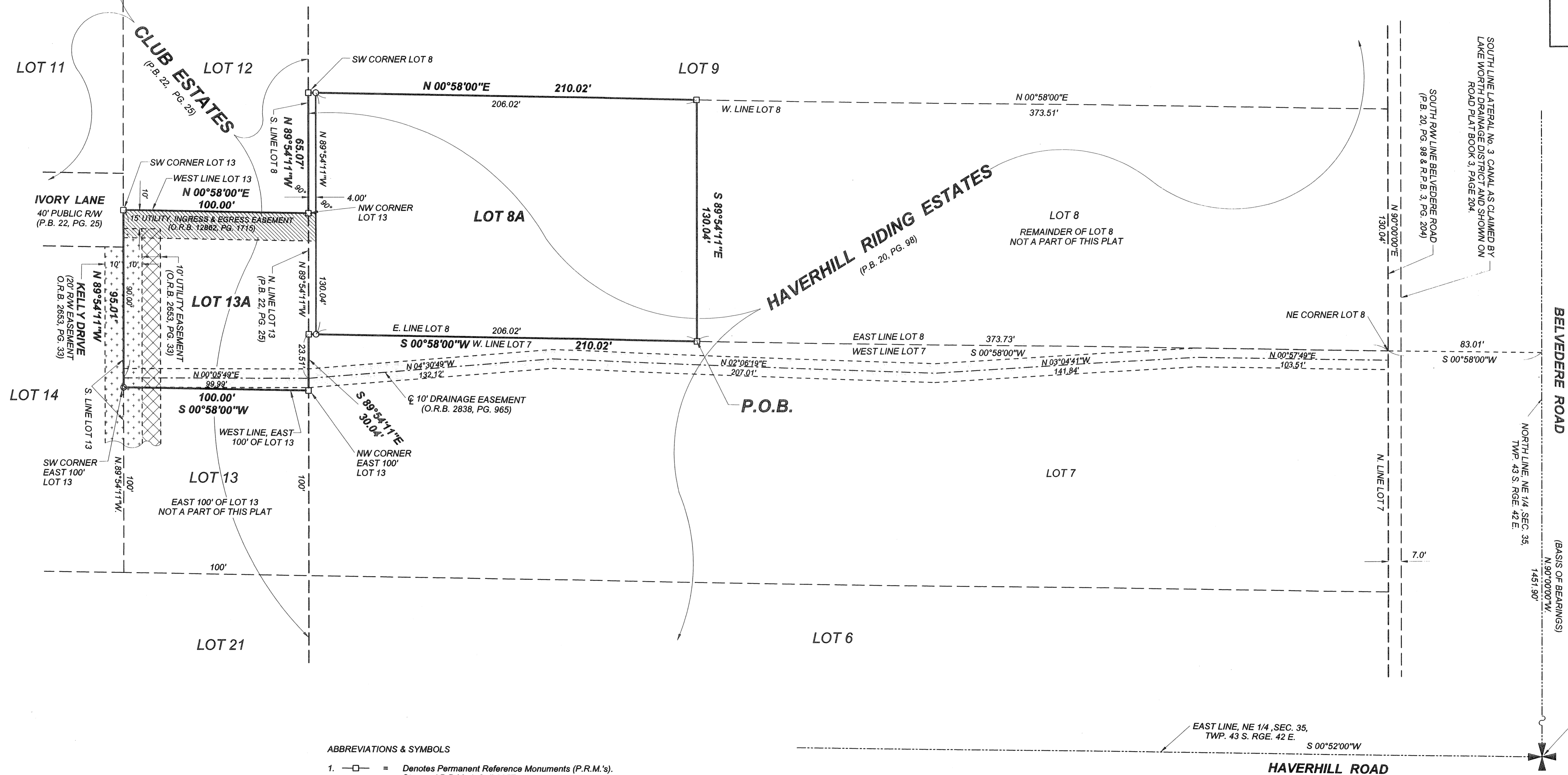
CLUB ESTATES REPLAT LOTS 8A & 13A

Being a replat of a portion of Lot 8, HAVERHILL RIDING ESTATES, and also being a replat of a portion of Lot 13, CLUB ESTATES according to the plats thereof, recorded in Plat Book 20, Page 98 and Plat Book 22, Page 25, respectively, Public Records of Palm Beach County, Florida, lying in Section 35, Township 43 South, Range 42 East, Town of Haverhill, Palm Beach County, Florida.
June, 2006



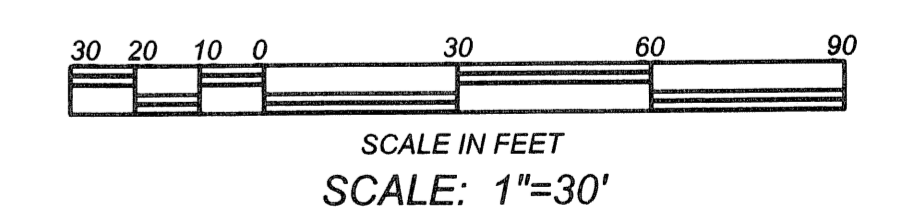
40

SHEET 2 OF 2



ABBREVIATIONS & SYMBOLS

- 1. = Denotes Permanent Reference Monuments (P.R.M.'s). Stamped P.R.M., L.S. # 3357.
- 2. C = Centerline.
- 3. RW = Right of Way
- 4. P.B. = Plat Book.
- 5. P.G.(S). = Pages.
- 6. SEC. = Section.
- 7. TWP. = Township.
- 8. RGE. = Range.
- 9. U.E. = Utility Easement.
- 10. D.E. = Drainage Easement.
- 11. A = Arc Length.
- 12. Δ = Central Angle.
- 13. R = Radius.
- 14. C.B. = Chord Bearing.
- 15. O.R.B. = Official Record Book.
- 16. R.P.B. = Road Plat Book.
- 17. L.A.E. = Limited Access Easement.
- 18. P.O.C. = Point of Commencement.
- 19. P.O.B. = Point of Beginning.
- 20. P.B.C. = Palm Beach County.
- 21. ESM.T. = Easement
- 22. = Set Mag Nail & Disk stamped "P.R.M. L.S. 3357".
- 23. = Set 5/8" Iron Rod & Cap stamped "WSC LB 3357".



CLUB ESTATES REPLAT LOTS 8A & 13A			
WALLACE SURVEYING <small>CORP. LICENSED BUSINESS # 4569 5563 VILLAGE BOULEVARD, WEST PALM BEACH, FLORIDA 33407 * (561) 840-4551</small>			
FIELD:	JOB No.: 82-442 "H"	F.B.:	PG.:
OFFICE: R.C.	DATE: MARCH, 2004	DWG. No.:	82-442-4
C'K'D:	REF: 82-442P3.ZAK	SHEET	2 OF 2